

FILE SUBMISSION GUIDELINES for custom printed

[Tyvek Credit Card Sleeves](#) | [Tyvek RFID Credit Card Sleeves](#) | [Tyvek RFID Passport Sleeves](#)

ACCEPTABLE FILE FORMATS: Material Concepts currently accepts files created with the following programs:

[Adobe Illustrator](#) | [Adobe Photoshop](#) | [Adobe InDesign](#) | [Adobe Acrobat PDFs](#)

Our art department can assist with making your design print ready for a nominal fee. Please inquire for details..

IMAGE RESOLUTION: Vector Graphics are the optimal file type (i.e. Illustrator/EPS files) as they are 100% crisp, never become pixelated, and are easily editable for shape and color. If raster graphics are included, resolution should be 300 dpi and should be "linked" and not embedded to preserve editability if needed. Supply all linked files along with source files please. Submitted files need to be high-resolution with editable layers.

DIE-LINES: It is ok to send art in a template, but it MUST BE a layer or element that can be turned off or omitted when printing. It CANNOT BE embedded in a flattened Photoshop file, PDF, or un-editable. NOTE: Per customer request, we can issue master die lines to use as a template for laying out artwork.

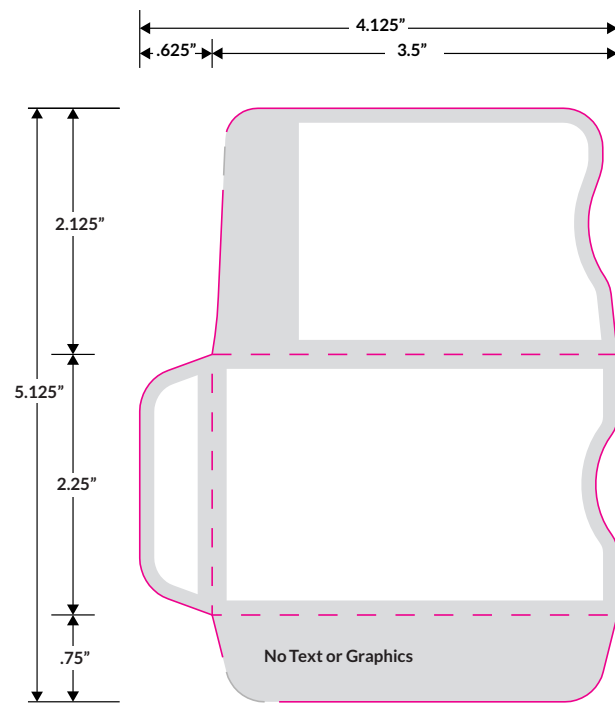
FONTS: Please send ALL fonts used in the files. We may have a copy of your particular font in our font library; however, many different companies make fonts of the same name and they do differ. We suggest converting any text to "outline (paths)". The letter characters then become a vector graphic object, avoiding the need for fonts.

BLEED: We require 1/8" bleed over all fold, score and cut lines. Any designs or color blocks that bleed to the edge of a fold line must bleed over to the back by 1/8". All type and graphics that do not bleed must be held 1/8" away from all fold, score and cut lines. This includes keeping art 1/8" away from flaps and side seams.

COLOR: Use Pantone Matching System (PMS) swatch books to choose a color rather than a computer monitor. All monitors display color differently, so the color seen on a screen will probably not reflect the actual print. 1-2 color jobs must use 100% black, not rich black (percentages of CMYK). Use only one kind of PMS color. PMS 185 U is a separate color from Pantone 185 C. Do not use other PMS suffixes such as CVC. When printing on Tyvek allow for variance in color as this material varies greatly in thickness. Tyvek swatch books do not exist. We use an uncoated book and match that color as best as possible. JPG and GIF images are flattened graphics just like photos and do not hold PMS information. They cannot be used for 1 and 2-color printing.

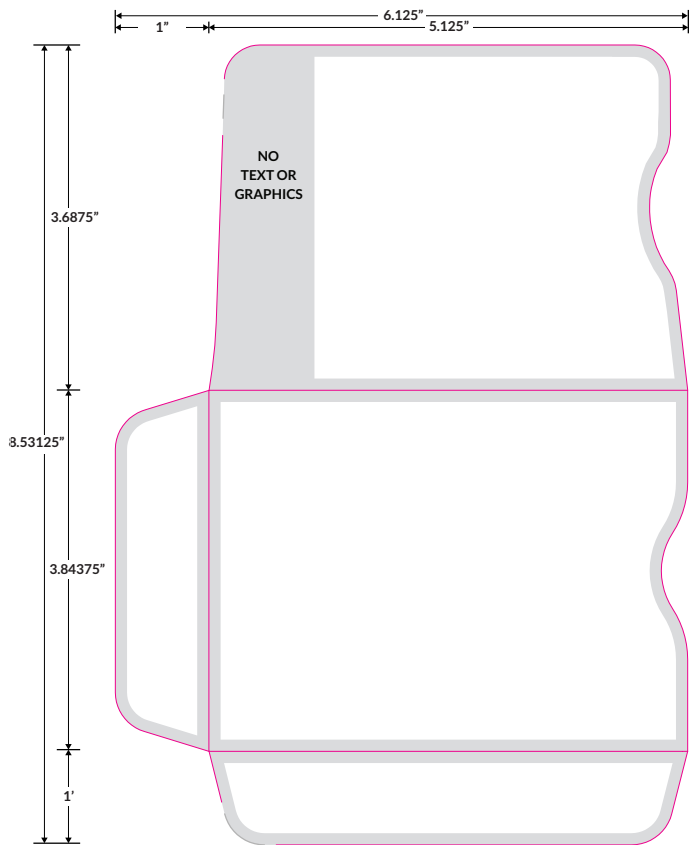
We hope you find these guidelines helpful in preparing your files for print. We also acknowledge that every job is different and may have issues that are not addressed here. Please feel free to contact your sales representative with any questions.

Credit Card Sleeve template



2.25" x 3.5" CC LS

Passport Sleeve template



Passport Sleeve 98x130mm
L-Seam
5.125" x 3.84375"
9.24.08
M117



Toll-Free 1-800-372-3366

Phone: 215-338-6515

Web: MaterialConcepts.com



@MatlConcepts



facebook.com/MaterialConcepts



Visit our Tyvek® Innovative Uses blog:
tyvek-blog.materialconcepts.com